

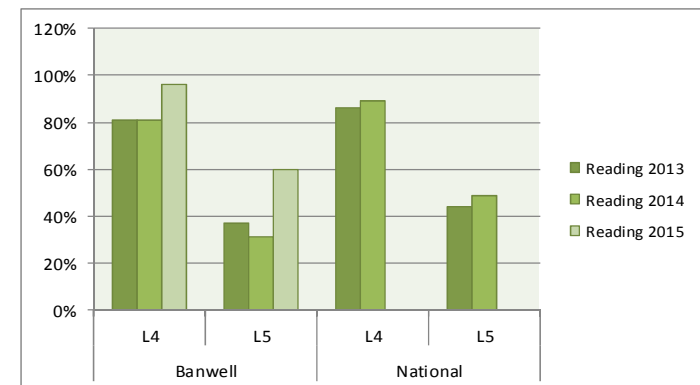
KS2 SATS OUTCOMES 2015 **READING**

WHOLE COHORT ANALYSIS

25 children were in the 2015 Year 6 cohort. Therefore each child represents 4%.

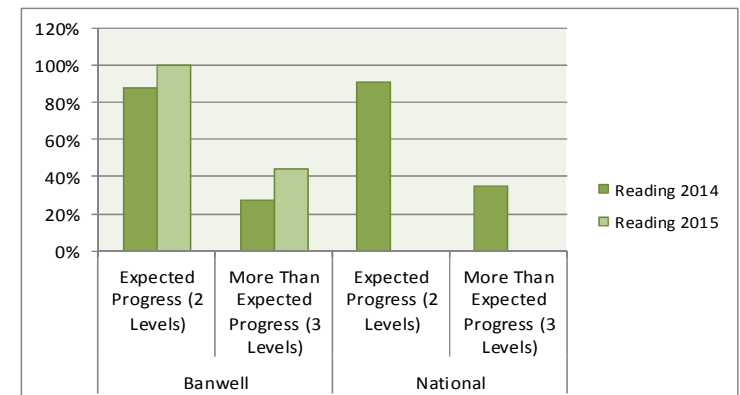
READING ATTAINMENT

	Year	Banwell		National	
		L4+	L5	L4+	L5
Reading	2015	96%	60%		
	2014	81%	31%	89%	49%
	2013	81%	37%	86%	44%



READING PROGRESS

	Year	Banwell		National	
		Expected Progress (2 Levels)	More Than Expected Progress (3 Levels)	Expected Progress (2 Levels)	More Than Expected Progress (3 Levels)
Reading	2015	100%	44%		
	2014	88%	27%	91%	35%



PUPIL PREMIUM ANALYSIS

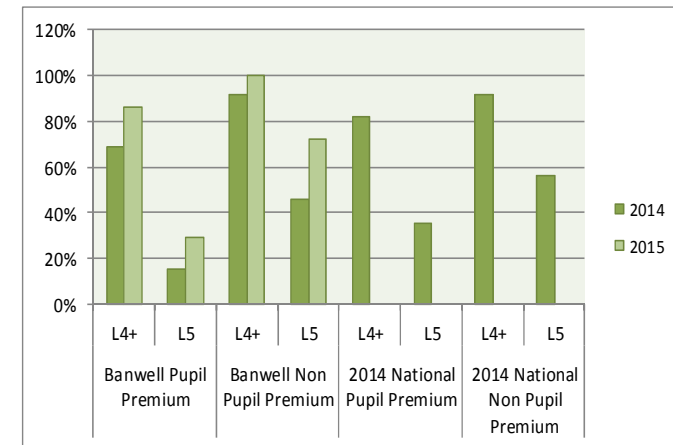
7 Pupil Premium and 18 Non Pupil Premium

READING ATTAINMENT – PUPIL PREMIUM

	Banwell Pupil Premium		Banwell Non Pupil Premium		2014 National Pupil Premium		2014 National Non Pupil Premium	
	L4+	L5	L4+	L5	L4+	L5	L4+	L5
2015	86%	29%	100%	72%				
2014	69%	15%	92%	46%	82%	35%	92%	56%

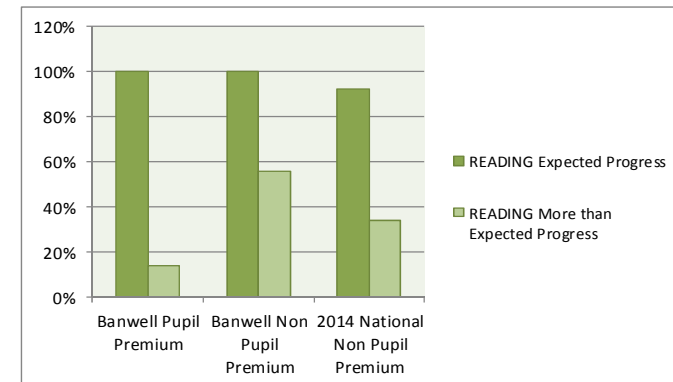
L4 Attainment Gap 2015 = 14%, 2014 = 23%

L5 Attainment Gap 2015 = 43%, 2014 = 31%



READING PROGRESS - PUPIL PREMIUM

	READING	
	Expected Progress	More than Expected Progress
Banwell Pupil Premium	100%	14%
Banwell Non Pupil Premium	100%	56%
2014 National Non Pupil Premium	92%	34%

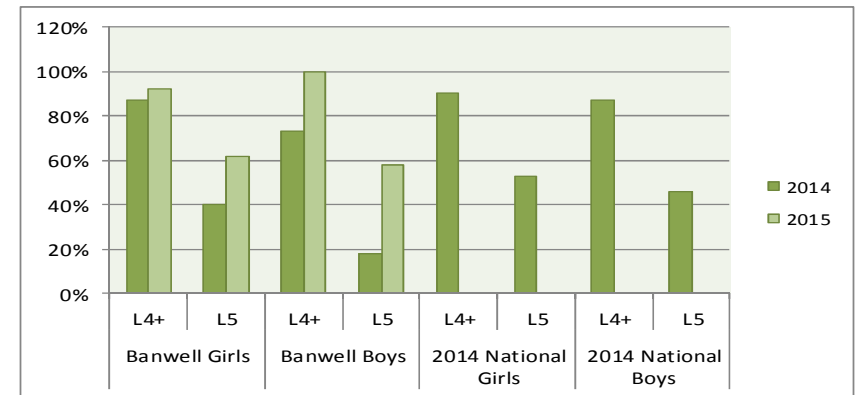


GENDER ANALYSIS

13 Girls and 12 Boys

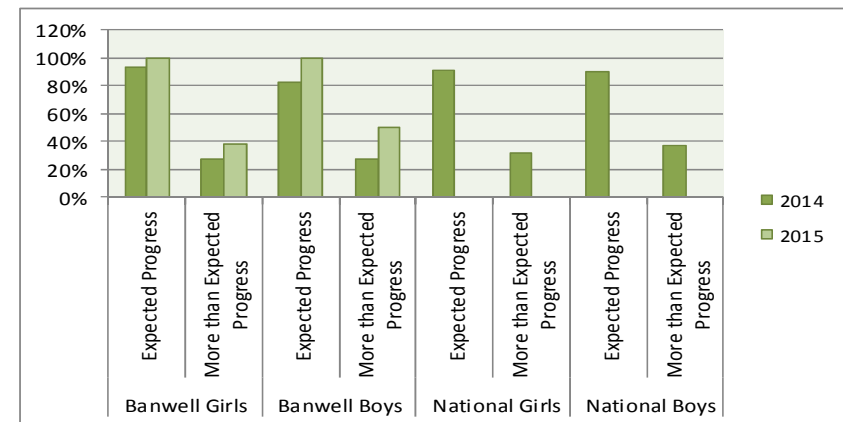
READING ATTAINMENT – BOYS AND GIRLS

	Banwell Girls		Banwell Boys		2014 National Girls		2014 National Boys	
	L4+	L5	L4+	L5	L4+	L5	L4+	L5
2015	92%	62%	100%	58%				
2014	87%	40%	73%	18%	90%	53%	87%	46%



READING PROGRESS – BOYS AND GIRLS

	READING		
		Expected Progress	More than Expected Progress
Banwell Girls	2015	100%	38%
	2014	93%	27%
Banwell Boys	2015	100%	50%
	2014	82%	27%
National Girls	2015		
	2014	91%	32%
National Boys	2015		
	2014	90%	37%

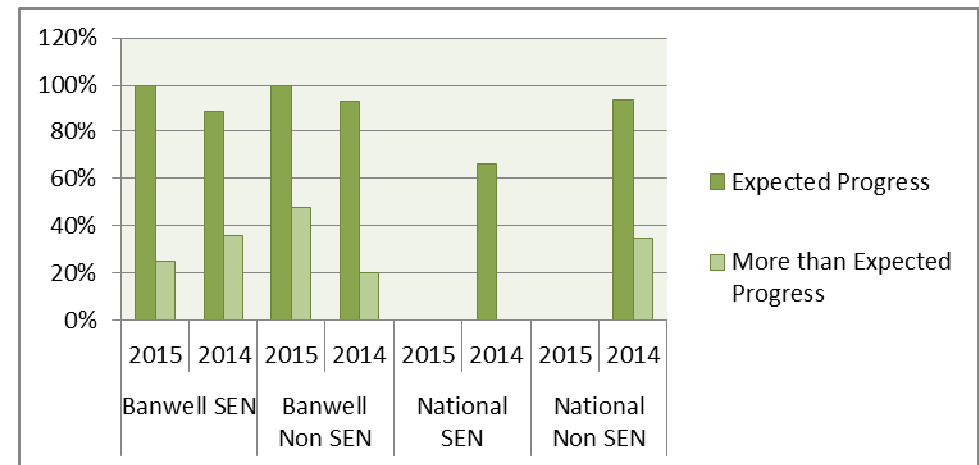


SEN ANALYSIS

4 children with SEN, 21 children without SEN

Comparisons of progress, not attainment, have been made between SEN and Non SEN. It is not appropriate to compare attainment as there will obviously be a difference here.

	READING		
		Expected Progress	More than Expected Progress
Banwell SEN	2015	100%	25%
	2014	89%	36%
Banwell Non SEN	2015	100%	48%
	2014	93%	20%
National SEN	2015		
	2014	66%	
National Non SEN	2015		
	2014	94%	35%



KEY CONCLUSIONS:

- ✓ **There is a clear picture of school improvement in reading.**
- ✓ Attainment in reading has significantly increased and is likely to be above national.
- ✓ Children making expected and more than expected progress has increased and is likely to be above national.
- ✓ Attainment of PP has increased and is likely to be above national at L4.
- ✓ The L4 attainment gap between PP and non PP has narrowed.

NEXT STEPS

- Increase the number of PP achieving L5.
- Decrease the attainment gap between PP and non PP at L5; this has widened this year.
- Increase the number of PP making more than expected progress.