

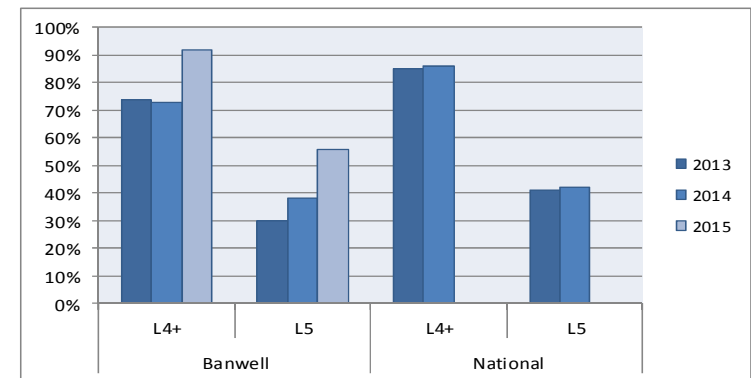
KS2 SATS OUTCOMES 2015 **MATHS**

WHOLE COHORT ANALYSIS

25 children were in the 2015 Year 6 cohort. Therefore each child represents 4%.

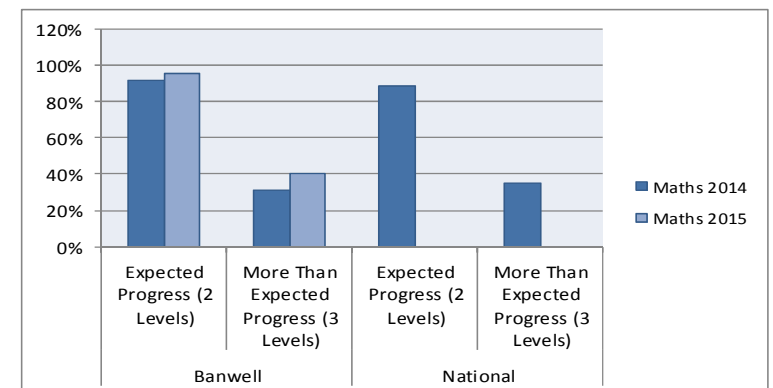
MATHS ATTAINMENT

	Year	Banwell		National	
		L4+	L5	L4+	L5
Maths	2015	92%	56%		
	2014	73%	38%	86%	42%
	2013	74%	30%	85%	41%



MATHS PROGRESS

	Year	Banwell		National	
		Expected Progress (2 Levels)	More Than Expected Progress (3 Levels)	Expected Progress (2 Levels)	More Than Expected Progress (3 Levels)
Maths	2015	96%	40%	90%	?
	2014	92%	31%	89%	35%



PUPIL PREMIUM ANALYSIS

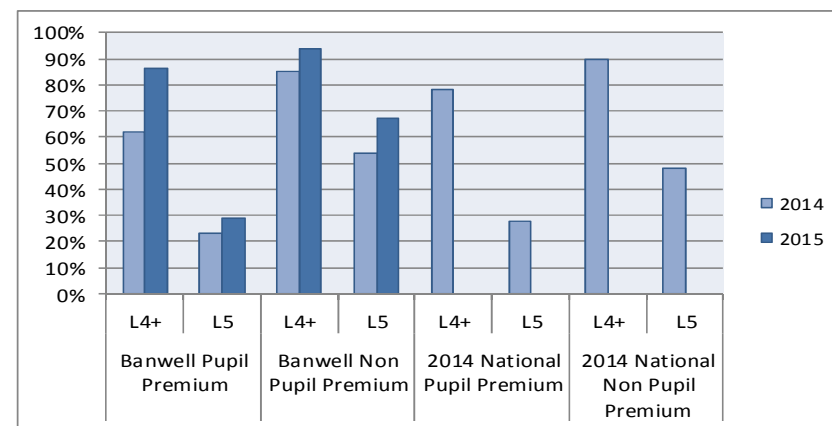
7 Pupil Premium and 18 Non Pupil Premium

MATHS ATTAINMENT – PUPIL PREMIUM

	Banwell Pupil Premium		Banwell Non Pupil Premium		2014 National Pupil Premium		2014 National Non Pupil Premium	
	L4+	L5	L4+	L5	L4+	L5	L4+	L5
2015	86%	29%	94%	67%				
2014	62%	23%	85%	54%	78%	28%	90%	48%

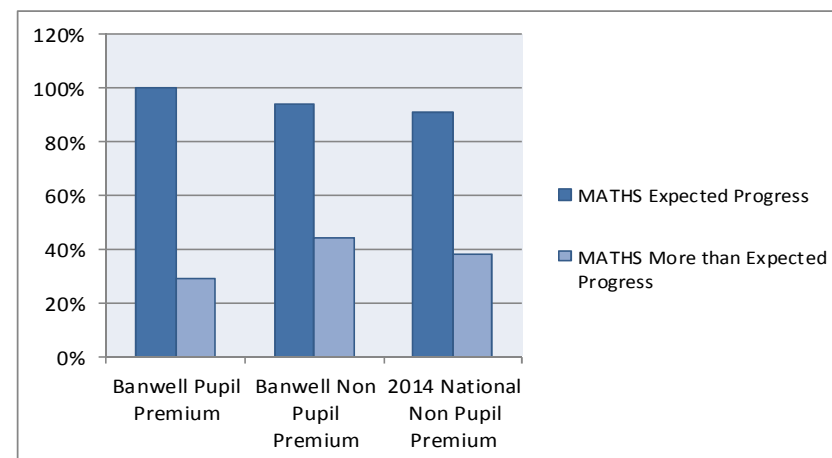
L4 Attainment Gap 2015 = 8%, 2014 = 23%

L5 Attainment Gap 2015 = 38%, 2014 – 31%



MATHS PROGRESS - PUPIL PREMIUM

	MATHS	
	Expected Progress	More than Expected Progress
Banwell Pupil Premium	100%	29%
Banwell Non Pupil Premium	94%	44%
2014 National Non Pupil Premium	91%	38%

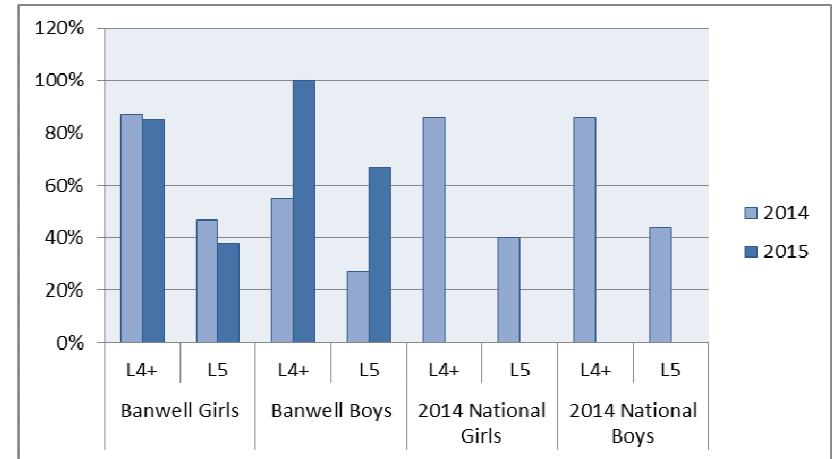


GENDER ANALYSIS

13 Girls and 12 Boys

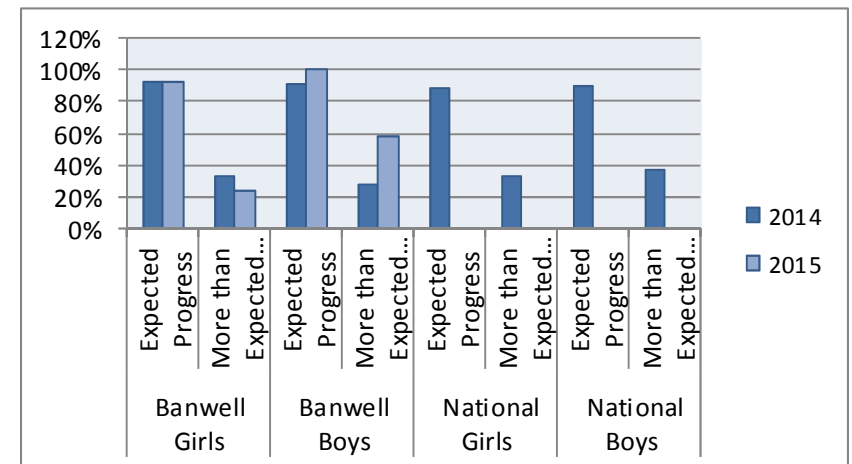
MATHS ATTAINMENT – BOYS AND GIRLS

	Banwell Girls		Banwell Boys		2014 National Girls		2014 National Boys	
	L4+	L5	L4+	L5	L4+	L5	L4+	L5
2015	85%	38%	100%	67%	86%	40%	86%	44%
2014	87%	47%	55%	27%				



MATHS PROGRESS – BOYS AND GIRLS

	MATHS		
		Expected Progress	More than Expected Progress
Banwell Girls	2015	92%	23%
	2014	93%	33%
Banwell Boys	2015	100%	58%
	2014	91%	27%
National Girls	2015		
	2014	89%	33%
National Boys	2015		
	2014	90%	37%

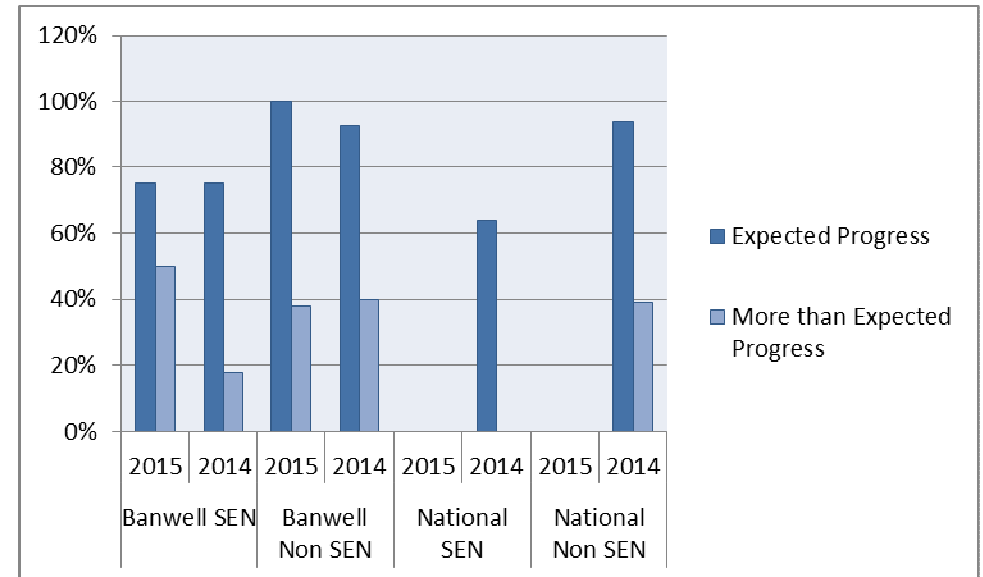


SEN ANALYSIS

4 children with SEN, 21 children without SEN

Comparisons of progress, not attainment, have been made between SEN and Non SEN. It is not appropriate to compare attainment as there will obviously be a difference here.

	MATHS		
		Expected Progress	More than Expected Progress
Banwell SEN	2015	75%	50%
	2014	75%	18%
Banwell Non SEN	2015	100%	38%
	2014	93%	40%
National SEN	2015		
	2014	64%	%
National Non SEN	2015		
	2014	94%	39%



KEY CONCLUSIONS:

- ✓ **Overall there is a very encouraging picture of school improvement in maths.**
- ✓ Maths attainment at L4 and L5 has significantly improved and both figures are likely to be above 2015 national.
- ✓ Children making expected and more than expected progress has improved and both figures are likely to be above 2015 national.
- ✓ Pupil Premium attainment is higher than last year, significantly at L4. Both figures are likely to be above national.
- ✓ The gap between PP and non PP L4 attainment has significantly decreased.

NEXT STEPS

- Reduce the attainment gap between PP and non PP at L5.
- Increase the number of PP making more than expected progress.
- Increase the attainment at L4 and L5 in girls maths. These figures are likely to be less than national.
- Increase the progress, especially the more than expected progress made by the girls. This figure is likely to be less than national.